



JOINT WELLNESS

CANINE OSTEOARTHRITIS

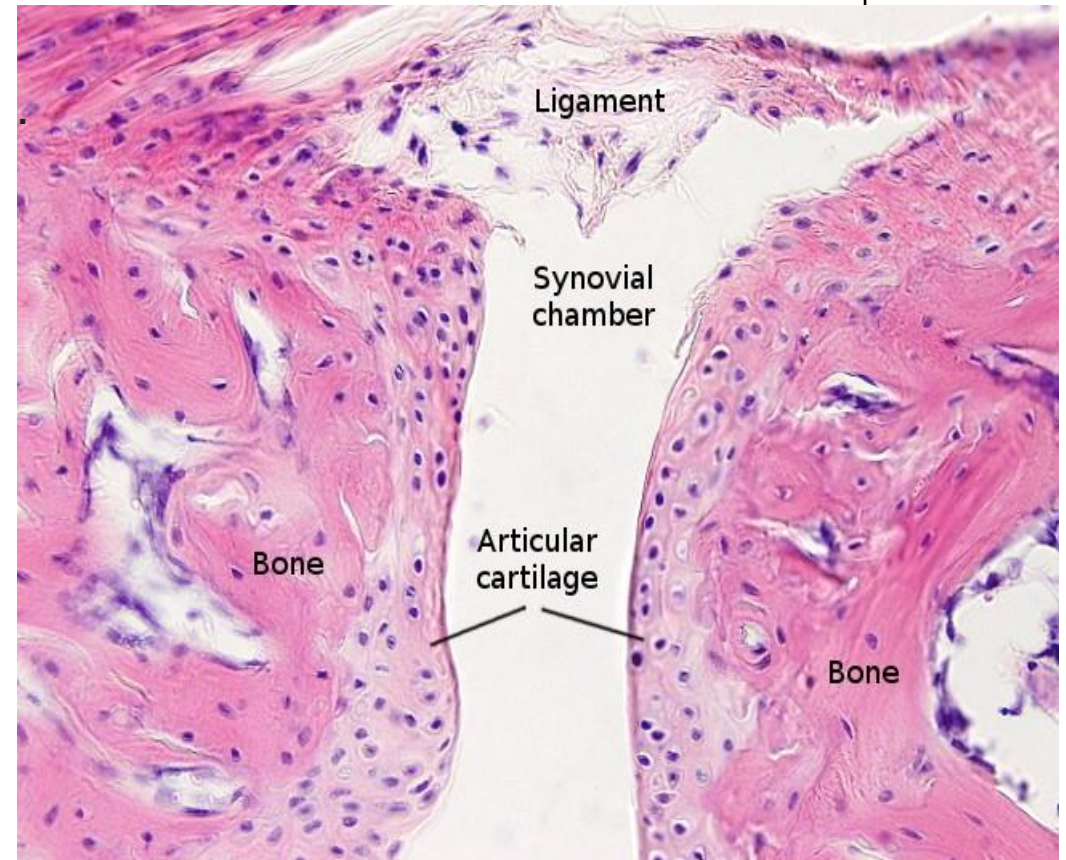
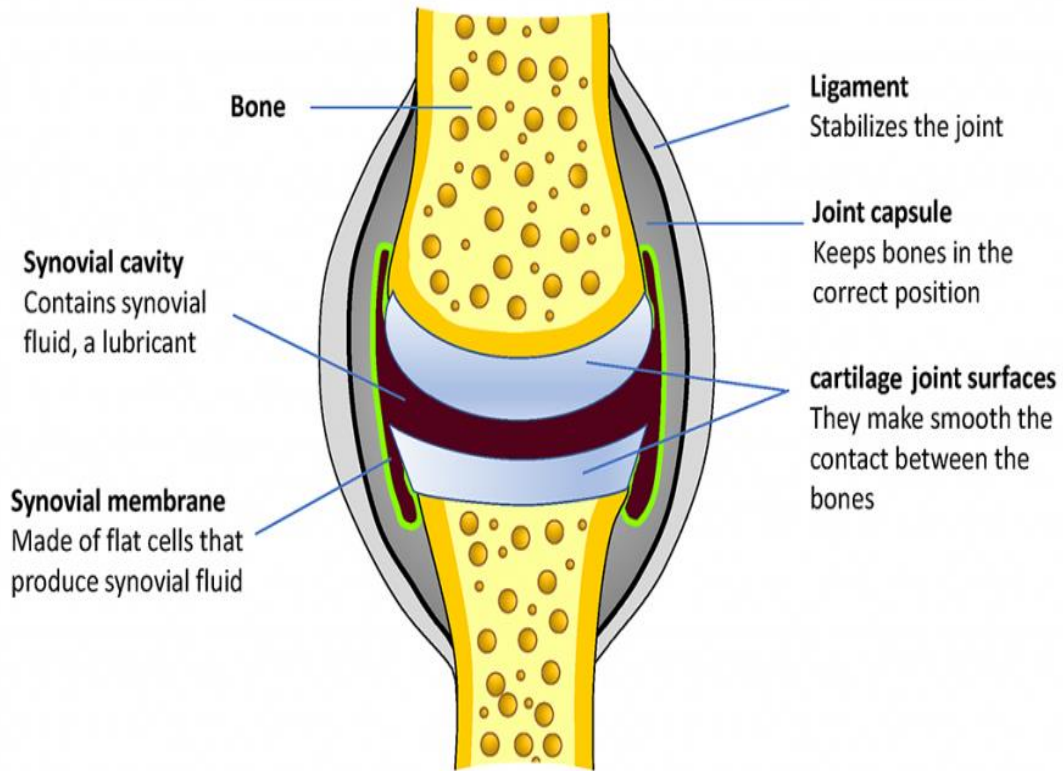
Dr Cynthia Njeri

St Austin's Veterinary Clinic

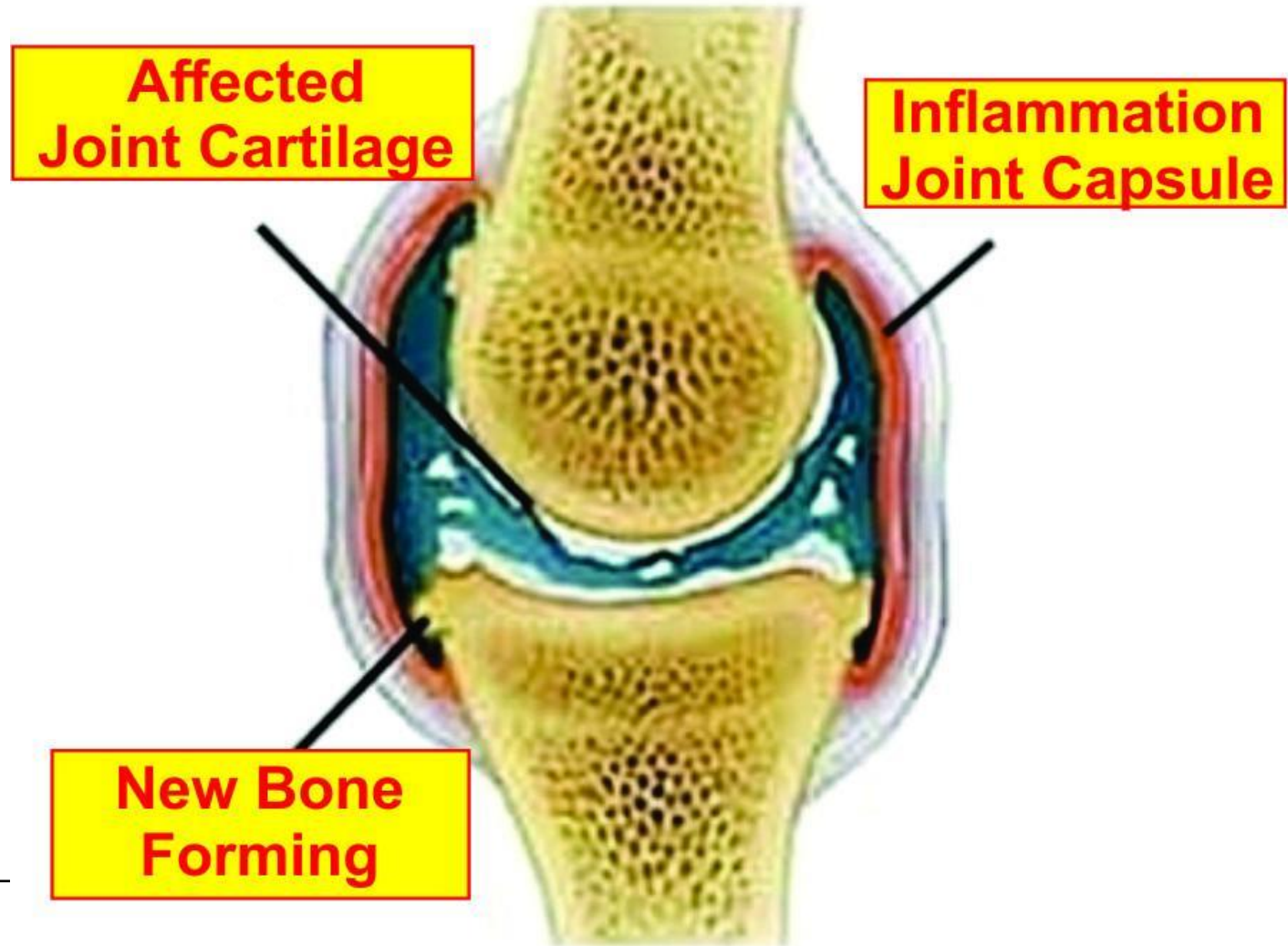
Introduction

- A chronic joint disease
- Significant problem in middle and old aged dogs, although it can occur in animals of any age, large breeds
- Biggest cause of chronic pain in dogs
- 1 in 4 dogs affected
- Best to recognize early
- Comprehensive approach at pain management

What is cartilage



Osteoarthritis



Clinical Signs

Lameness-Limping
before and after
walks.

Exercise
intolerance

Swollen/cracking
joints

Signs of pain when
standing, walking,
or sitting up or
down

Behavioural
changes

Muscle atrophy

• Breeds

Chow chows

Pugs

Shit zus

Blood hounds

Basset Hounds

French Bulldogs

Neopolitan Mastiffs

Old English sheepdogs

Bernese Mountain Dogs



- Labrador Retrievers
- German Shepherds
- Golden Retrievers
- Springer Spaniels
- Rottweilers
- Great Danes
- St Bernard's

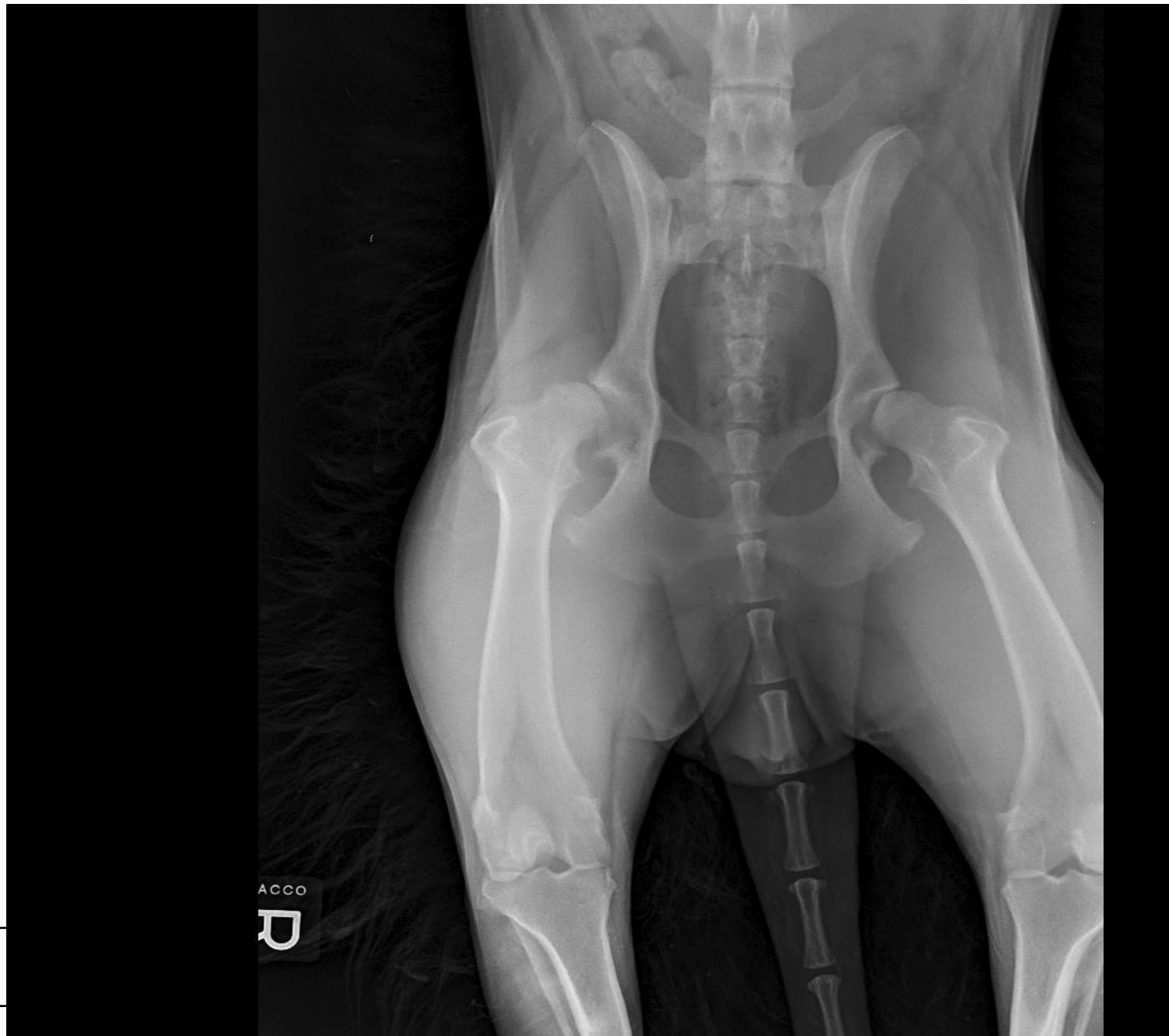
Common areas of bone and joint pain



Joint X-ray

- Radiographic changes in the joint include joint effusion, periarticular soft-tissue swelling, osteophytosis, subchondral bone sclerosis, and possibly narrowed joint space.

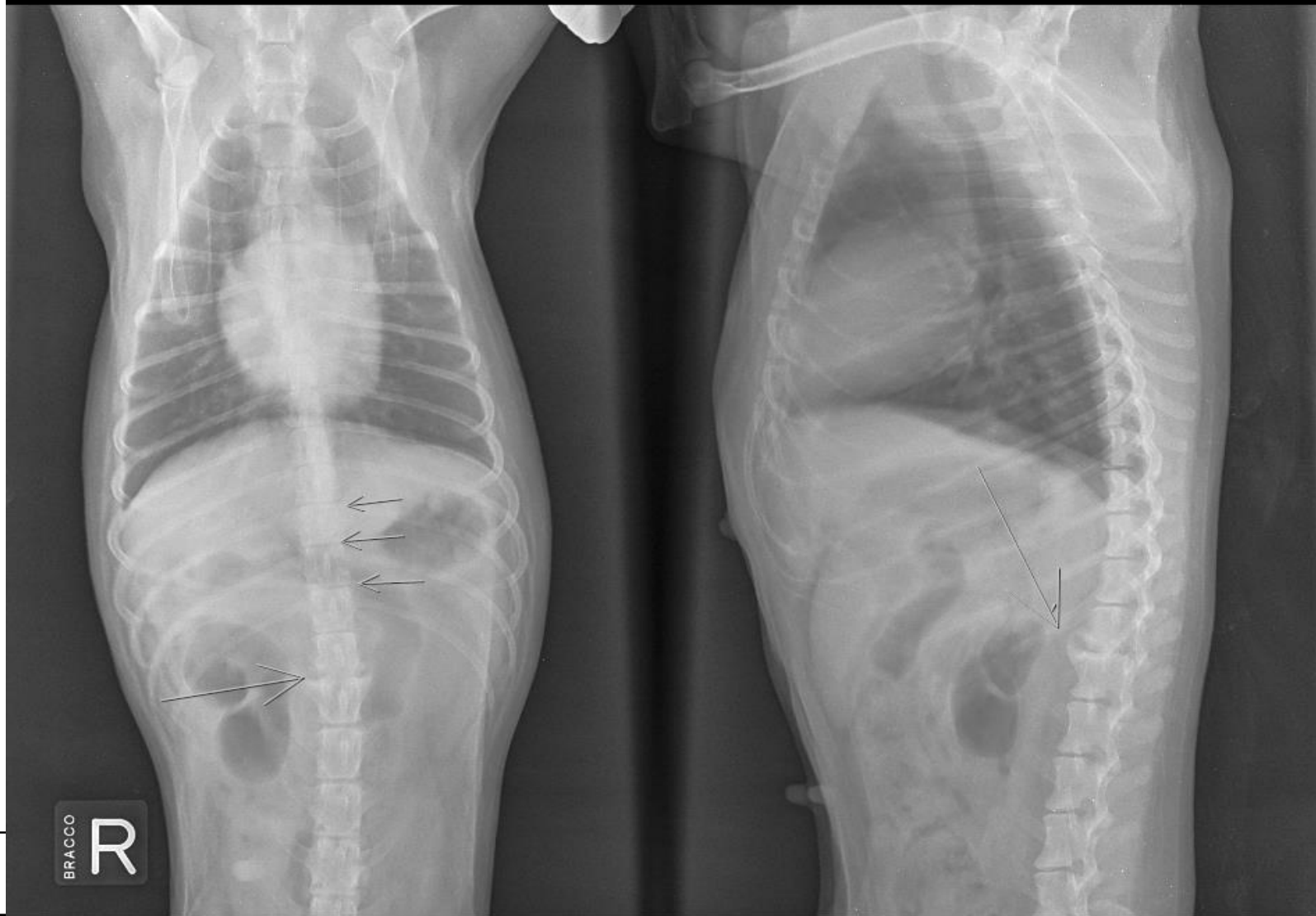
Case 1



Case 2



Case 3



Options for vets

- What can we do to help?
- Growth in pet food industry-pets living longer and healthier
- Consequence- increases in chronic degenerative conditions
- Joint problems are high on this list
- Pain management crucial
- Joint supplements long term

Joint supplements

Glucosamine & Chondroitin

- **Glucosamine** (Chondroprotective agent)
- Naturally occurring amino sugar
- Precursor in Glycosaminoglycans(GAGS)-Major component of joint cartilage and articular cartilage
- Slows disease progression
- **Chondroitin**
- Chondroitin promotes water retention and elasticity in the cartilage.
- Aids in repair of damaged connective tissue

Joint Guard

with Zinc, calcium vitamin E

- Canine hip dysplasia
- Along with osteoarthritis, dogs may also suffer from hip dysplasia
- Skeletal maturity-10-13 months
- Preventative measures placed early
- **Carpal hyperextension** is caused by excessive force on the carpus, leading to the tear of the ligaments and fibrocartilage and collapse of the carpal joint.
- INSERT DOSAGE HERE



Conclusion

Natural product for Overall joint health

Slow down deterioration of cartilage

Mobility and comfort

Counter adverse effects of Nsaids

Safe for use in animals-no Xylitol!

Easily available and affordable