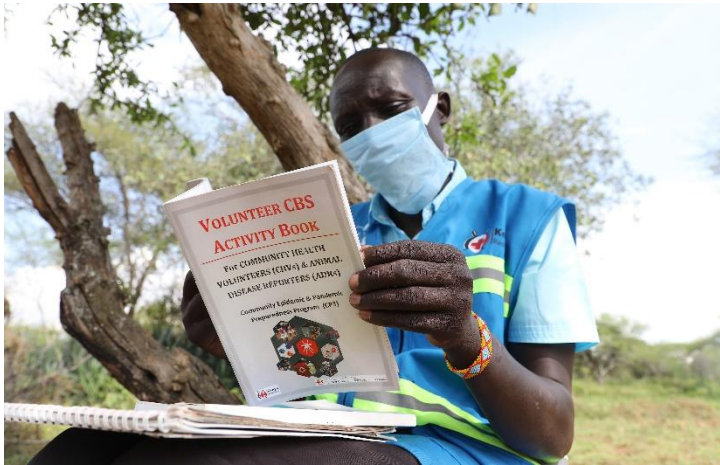




ENHANCING EPIDEMIC AND PANDEMIC PREPAREDNESS THROUGH COMMUNITY BASED SURVEILLANCE



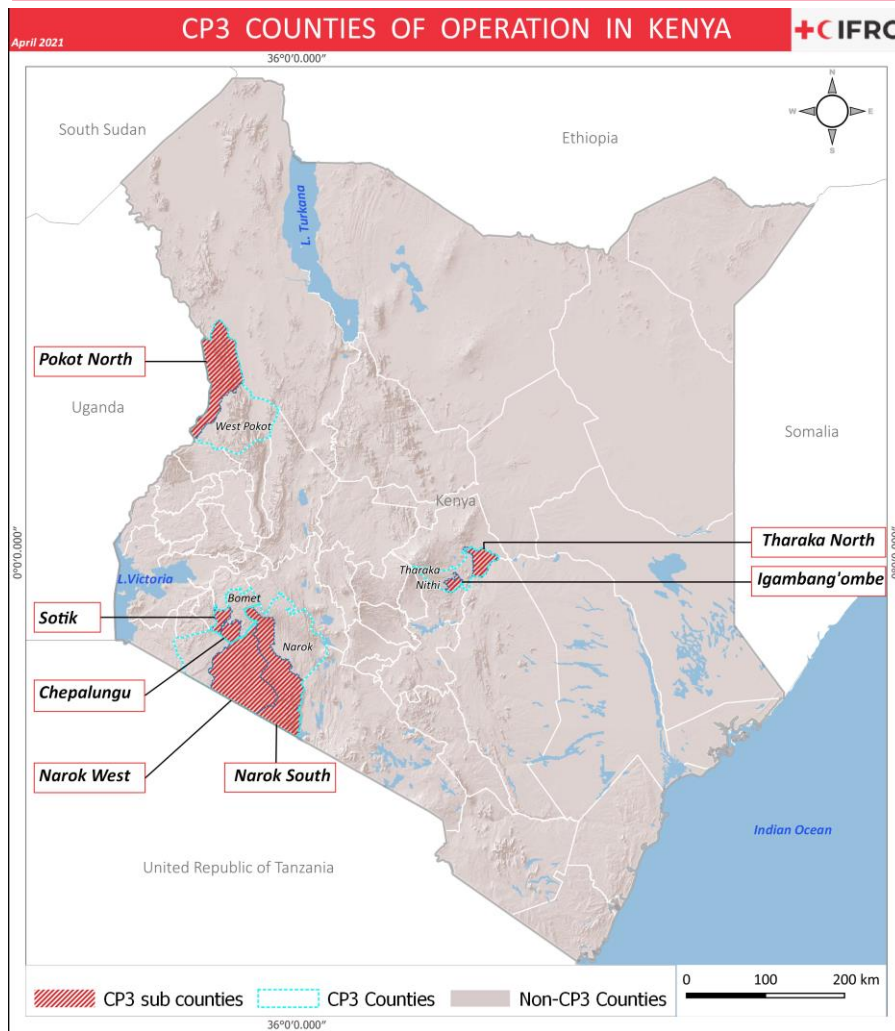
Introduction

- Community Based Surveillance is a preparedness model under Community Epidemic and Pandemic Preparedness Program (CP3)
- The Project aims to increase capacity of population at risk to prevent, detect and respond to epidemics/pandemics
- Leverages on **One Health approach** and **Community Health strategy**



Kenya
Red Cross

Project Operation Area



- **Project sites:** Bomet, West Pokot, Narok and Tharaka Nithi Counties



What is Community-based surveillance (CBS)?

Raise the voice of the community



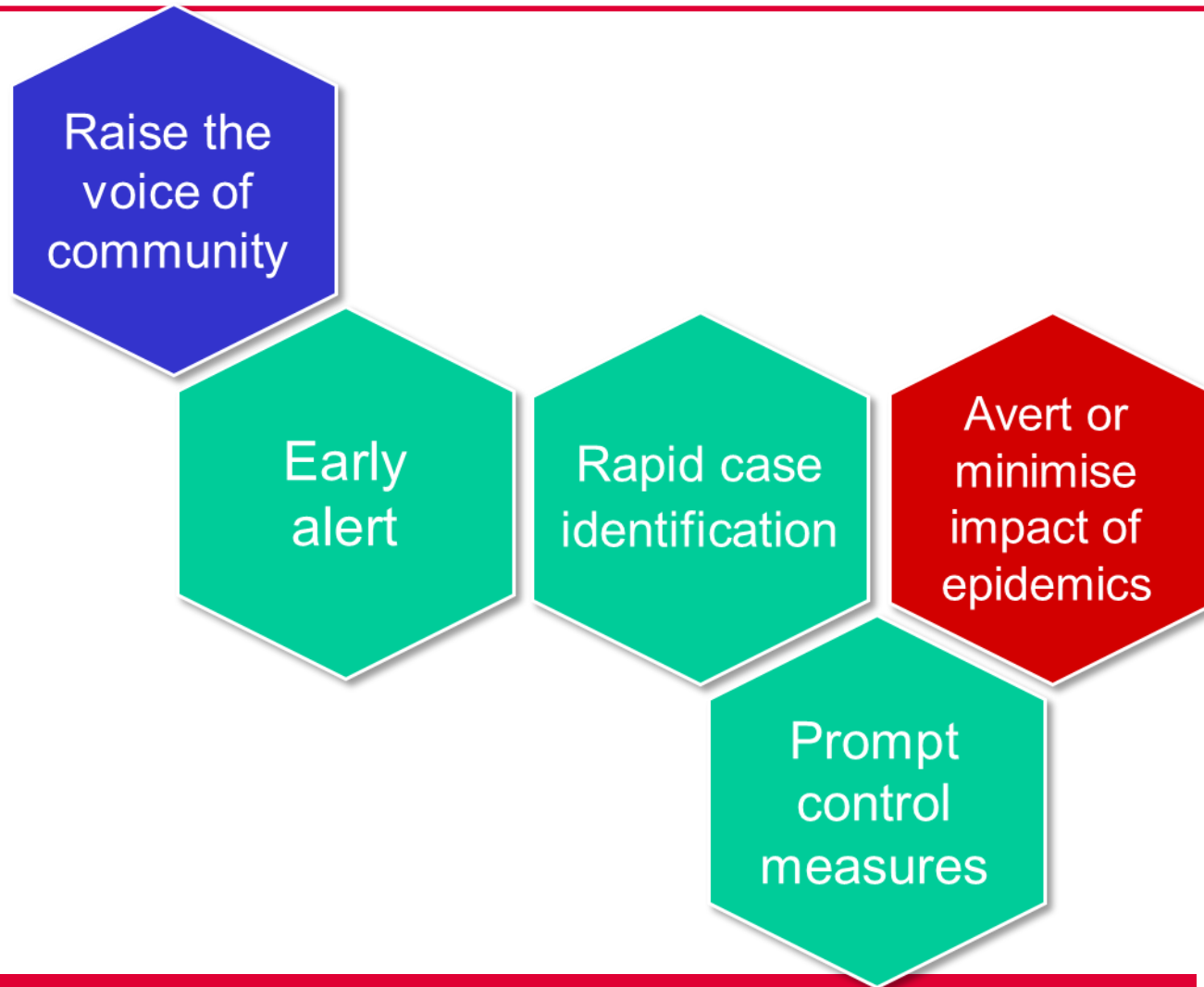
Epidemics start and end in community

- Active process of community participation in **Detecting, Reporting, Responding and Monitoring** health events in the community

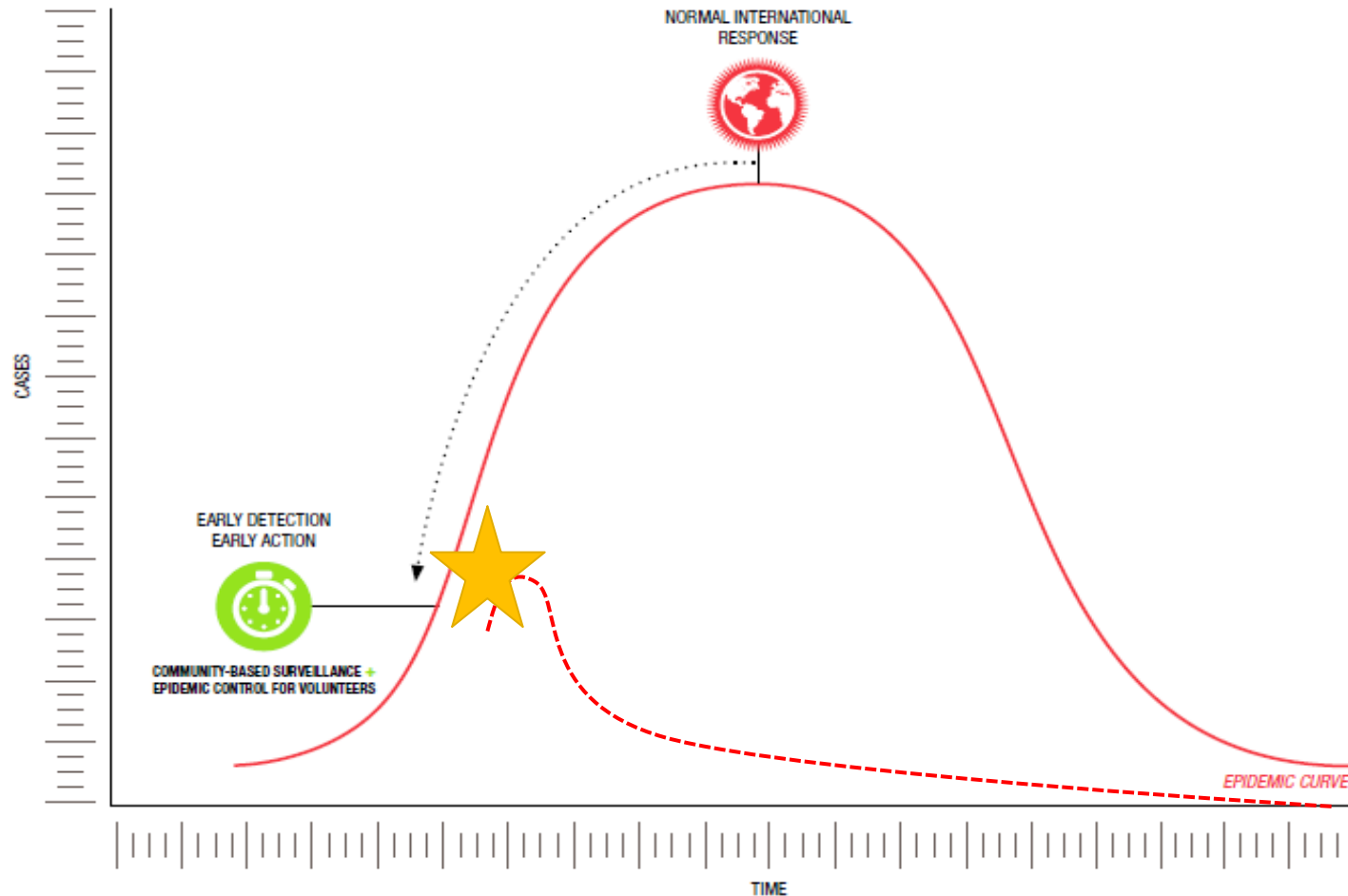


Kenya
Red Cross

Aim of CBS



Change the course of an outbreak



Kenya
Red Cross

CBS Principles

- CBS is a simple, adaptable and low-cost public health initiative.
- Community volunteers and community members raise an alert of possible serious health events.
- Complements the health system and early warning system

Early warning of potentially epidemic diseases

Contribute to epidemic management:

Prevent

Detect

Mobilise

Mobilise



Kenya
Red Cross

Priority Diseases under CBS

Criteria for selection of diseases in CBS reporting;

1. Major public health concern

- high impact with high case fatality rate
- high prevalence of cases
- past epidemics

2. Effective interventions

- possible to control the spread - quickly interrupt transmission,

3. Feasible for community volunteers



Kenya
Red Cross

Priority Diseases under CBS

Animal alerts/Zoonoses

- Anthrax
- Rabies
- Rift Valley Fever
- Cluster of unusual animal deaths

Human alerts

- Acute watery diarrhoea (Cholera)
- Measles
- Polio
- Viral haemorrhagic fevers (VHFs)
- Cough and Difficulty in Breathing
- Cluster of unusual illnesses or deaths of people



Kenya
Red Cross

How does CBS work?

Volunteers were trained on how to identify the potential alerts and how to rapidly report them up to supervisors.

Use '**Community Case Definitions**' to identify potential alerts and report in real time

***384* 60#**



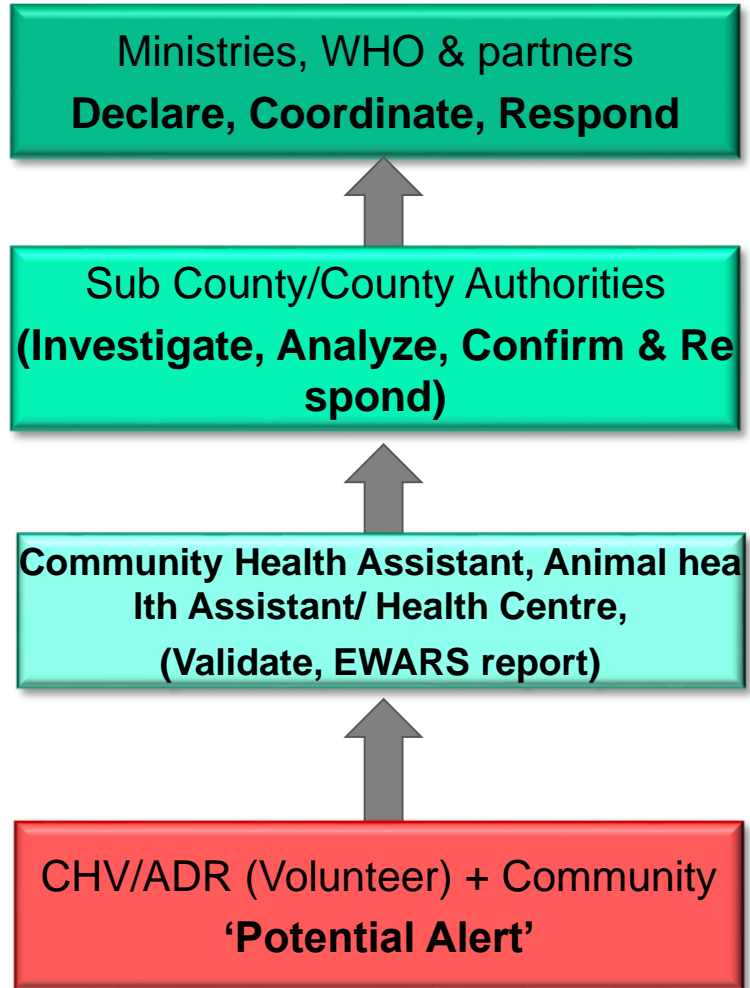
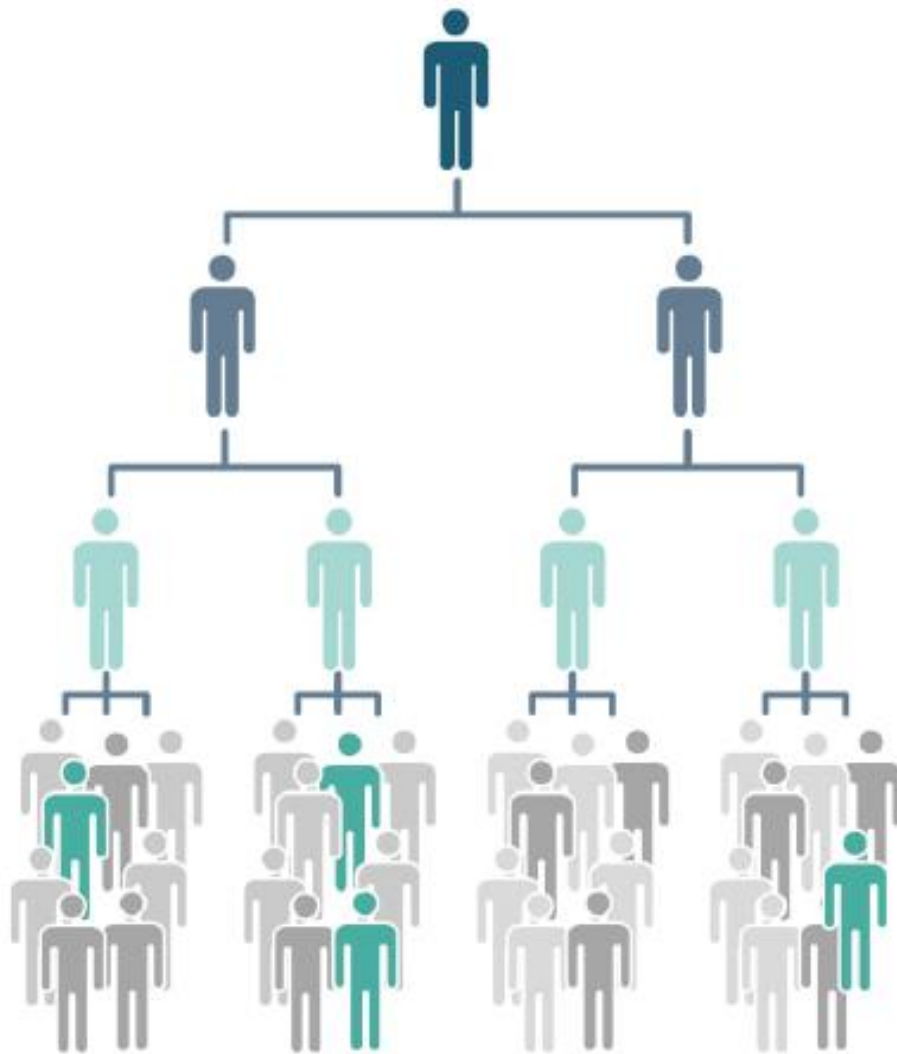
Thursday, Aug 12 • 3:18 PM

ALERT!!
Aggressive
Animal, rabies
signs report has
been filed in
Nasakam (Losam)
- Village ID: 476 by
Volunteer ID: 9000
Through Phone
number: +254715
872014. Alert No:
2108121518



Kenya
Red Cross

How does CBS work?-Reporting Steps



Kenya
Red Cross

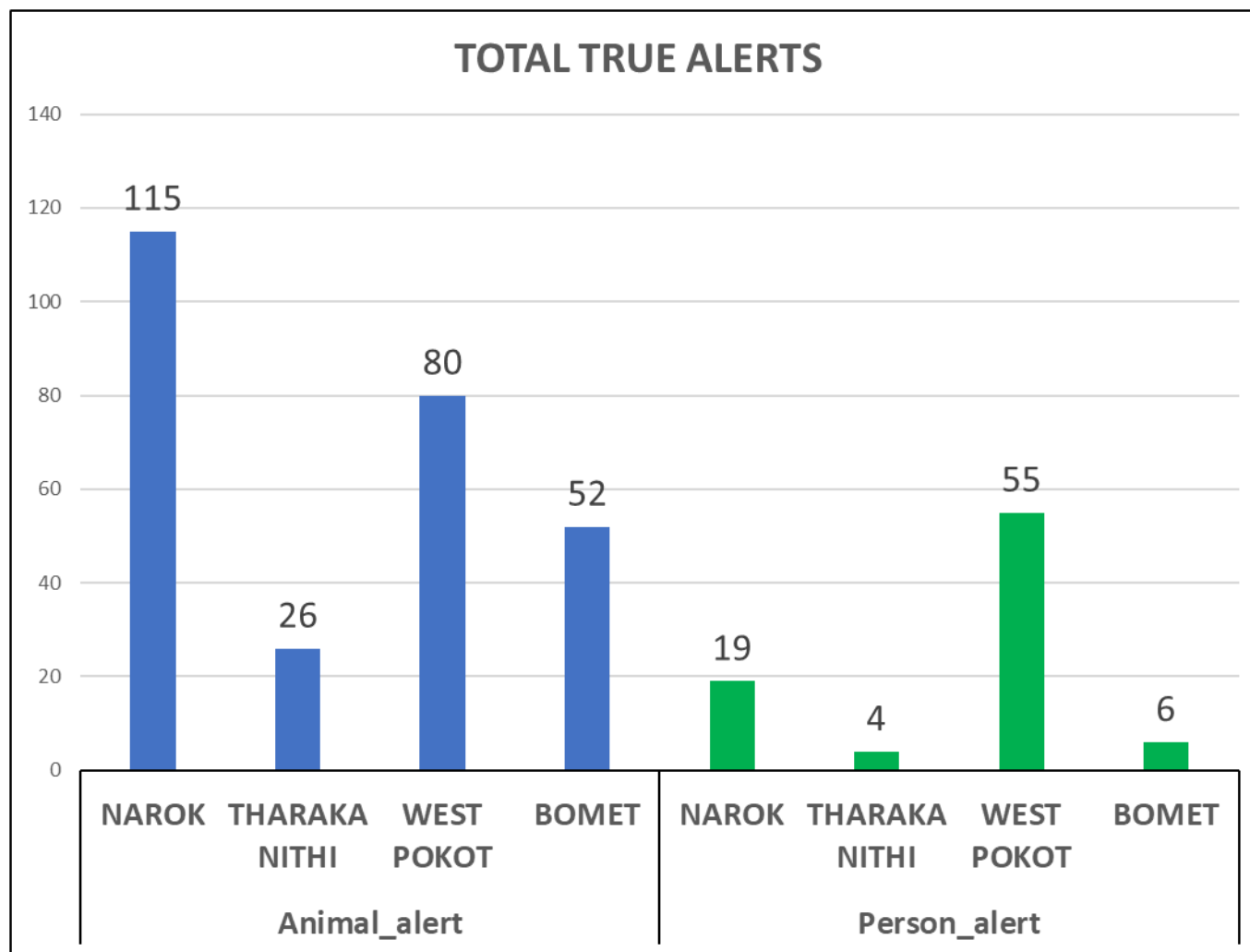
Results: Achievements

- 890 Community Health Volunteers trained (Health Champions)
- Increased Community awareness on epidemic prone diseases
- Early detection and rapid response to Disease Outbreaks
- Strengthened Community coordination (all stakeholders)
- Coordinated Response (One Health)
- Strong community led interventions



Kenya
Red Cross

Results: CBS Submitted Disease Alerts



Kenya
Red Cross

Lessons and Recommendations

Lessons

- It takes collaborative effort that builds on the interdependency between Communities, civil society, private sectors and Government for successful public health interventions (ALL inclusive-OH)
- Communities are key in preparedness to disease outbreaks

Recommendations

- Integrate CBS in existing surveillance systems
- Expand use of innovative technologies for disease surveillance
- Advocate for allocation of resources for CBS and Early response



THANK YOU



Kenya
Red Cross